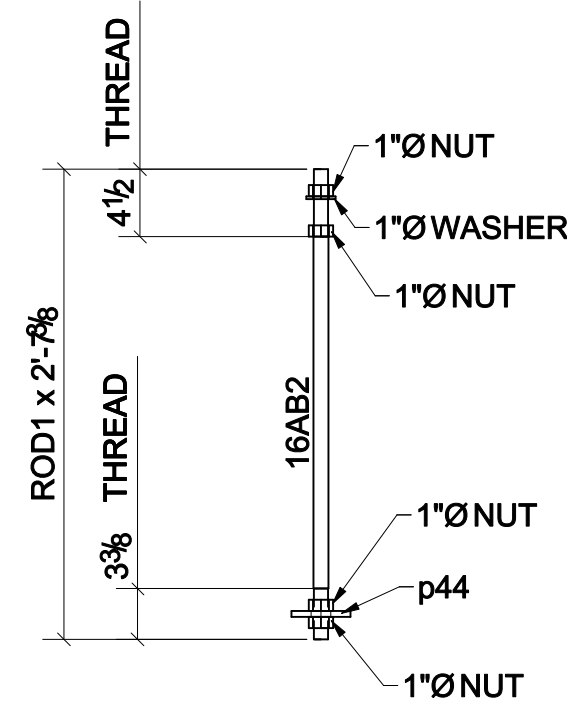
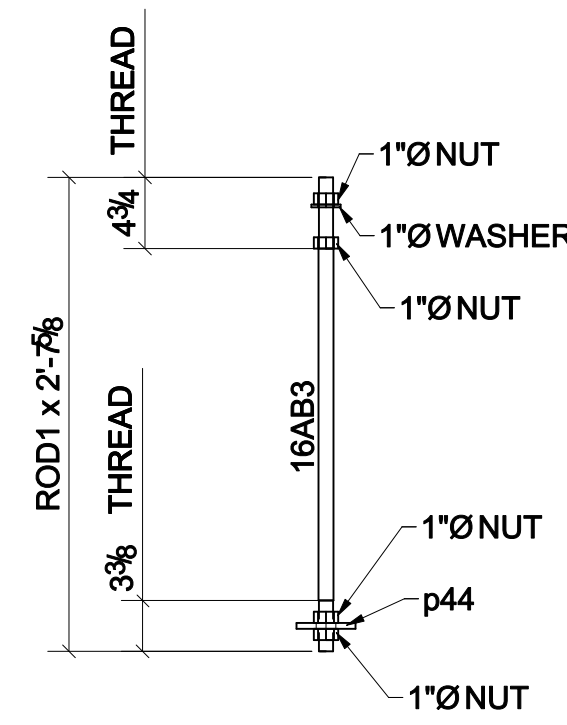


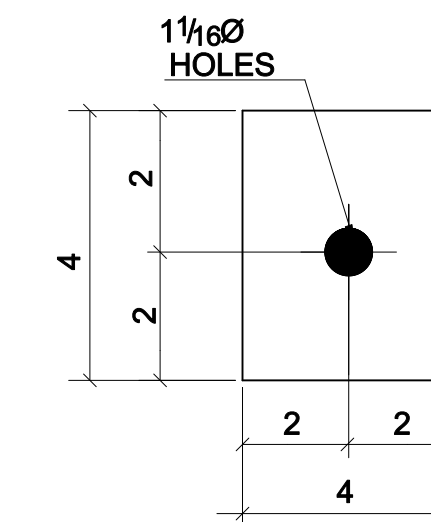
**40 - ANCHOR\_ROD - 16AB1**



**72 - ANCHOR\_ROD - 16AB2**

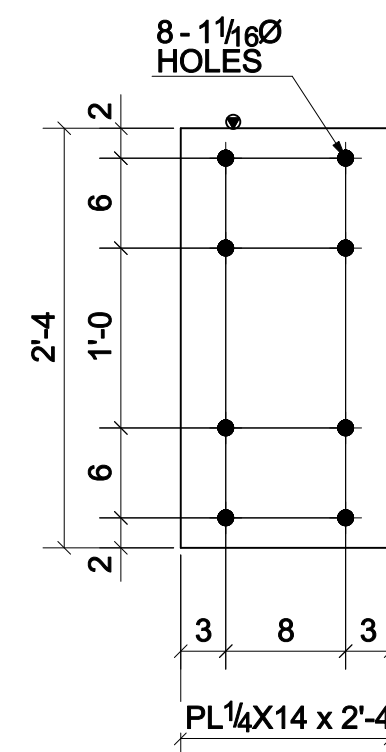


**16 - ANCHOR\_ROD - 16AB3**

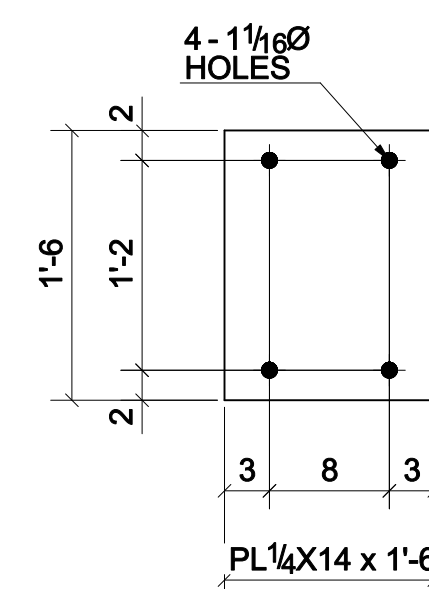


**DETAIL OF P44**

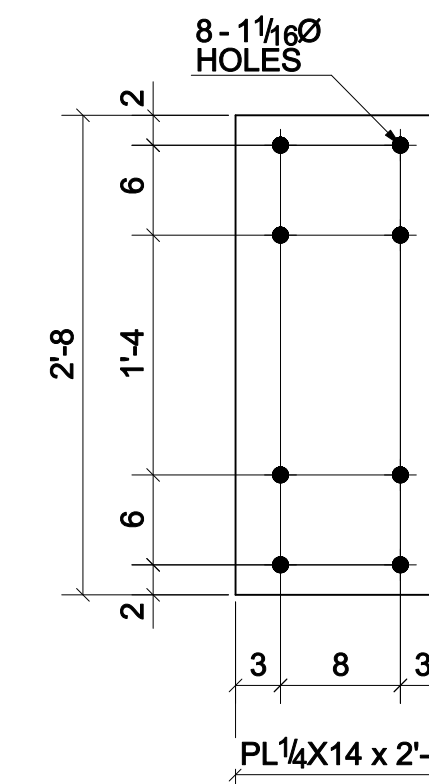
BILL OF MATERIAL					
MARK	QTY	DESCRIPTION	LENGTH	WEIGHT	REMARKS
16AB1	40				
16AB1	40	ROD1"	2'-5 5/8"	240	F1554
p44	40	PL3/8"X4"	0'-3 15/16"	80	A36
	40	1_WASHER		0	
	160	1_HEAVY_HEX_NUT		40	
16AB2	72				
16AB2	72	ROD1"	2'-7 3/8"	432	F1554
p44	72	PL3/8"X4"	0'-3 15/16"	144	A36
	72	1_WASHER		0	
	288	1_HEAVY_HEX_NUT		72	
16AB3	16				
16AB3	16	ROD1"	2'-7 5/8"	112	F1554
p44	16	PL3/8"X4"	0'-3 15/16"	32	A36
	16	1_WASHER		0	
	64	1_HEAVY_HEX_NUT		16	
16LP1	7				
16LP1	7	PL1/4"X14"	2'-4"	195	A36
16LP2	10				
16P2	10	PL1/4"X14"	1'-6"	179	A36
16LP3	4				
16LP3	4	PL1/4"X14"	2'-8"	127	A36
TOTAL WEIGHT THIS DRAWING				1669	



**7 - LEVELING\_PLATES - 16LP1**



**10 - LEVELING\_PLATES - 16LP2**



**4 - LEVELING\_PLATES - 16LP3**

NOTE:-  
 WIDE FLANGE - ASTM A992  
 HSS - ASTM 500 GR-B  
 PLATE, ANGLE, CHANNEL-A36

NK		A	FOR APPROVAL	
DATE	BY	NO.	REVISION	
START DATED FOR				
APPROVAL:				
FABRICATION:				
ERECTION:				
FIELD USE				
FILE:			CUSTOMER:	
TOLERANCE FOR STEEL FABRICATION U.O.			PROJECT:	
1/16"			DRAWN BY: N.K	
			DATE :	
			CHECKER: IC	
			DATE :	
			CONTRACT NO.:	
			GENERAL CONTRACTOR	
			JOB NO.:	
			DRAWINGS NO.: 16	

Holes: 13/16" UNF SURFACE PREP: ASTM 123 ELECTRODES: E70XX UNF  
 BOLT 3/4 A325N UNF WELD: 1/4 FILLET UGJN PAINT: GALVANIZE