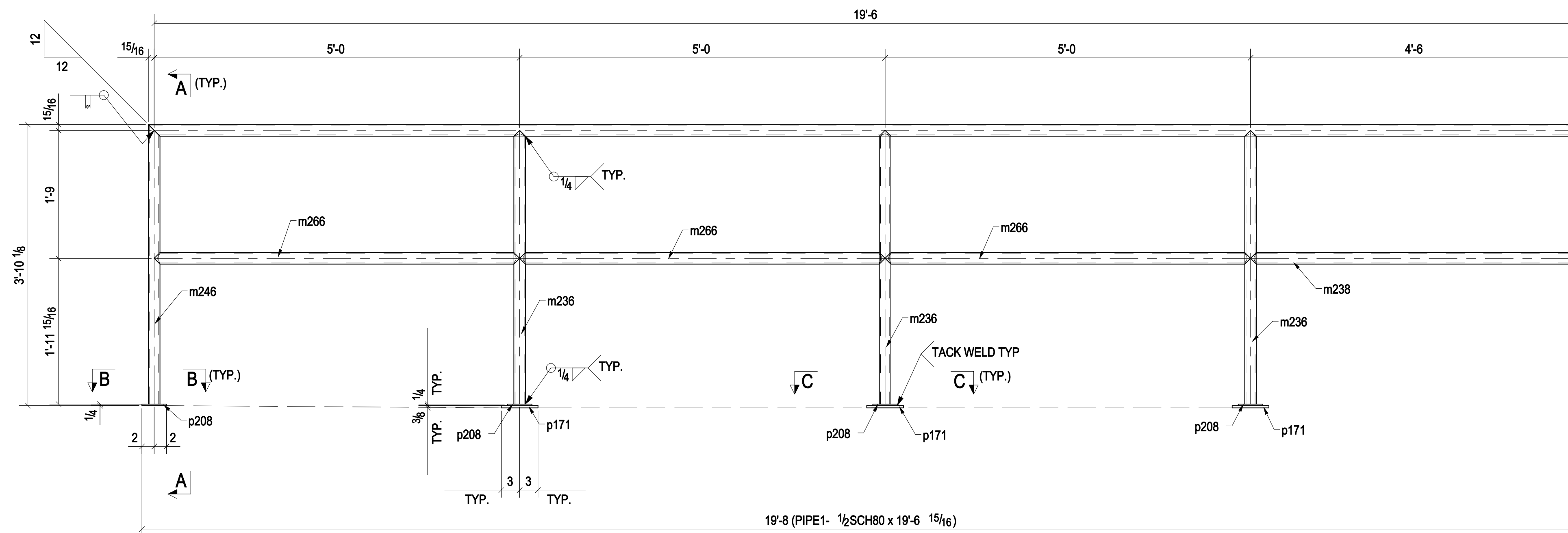


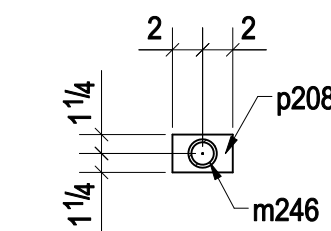
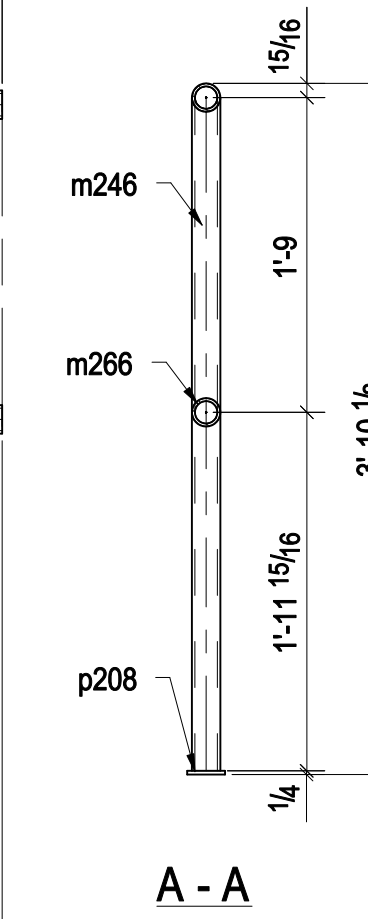
BILL OF MATERIAL

MARK	QTY	DESCRIPTION	LENGTH	WEIGHT	REMARKS
173GR1	1	GUARDRAIL			
173GR1	1	PIPE1-1/2SCH80	19'-8 15/16"	67	A53
m236	3	PIPE1-1/2SCH80	3'-8 15/16"	38	A53
m238	1	PIPE1-1/2SCH80	4'-6"	15	A53
m246	1	PIPE1-1/2SCH80	3'-9 7/8"	13	A53
m266	3	PIPE1-1/2SCH80	5'-0"	51	A53
p171	3	FL3/8"X2"	0'-6"	4	A36
p208	4	PL1/4"X2 1/2"	0'-4"	3	A36
173GR2	1	GUARDRAIL			
173GR2	1	PIPE1-1/2SCH80	14'-11 15/16"	51	A53
m236	2	PIPE1-1/2SCH80	3'-8 15/16"	25	A53
m238	1	PIPE1-1/2SCH80	4'-6"	15	A53
m246	1	PIPE1-1/2SCH80	3'-9 7/8"	13	A53
m266	1	PIPE1-1/2SCH80	5'-0"	17	A53
m270	1	PIPE1-1/2SCH80	5'-5"	18	A53
p171	3	FL3/8"X2"	0'-6"	4	A36
p208	3	PL1/4"X2 1/2"	0'-4"	2	A36
TOTAL WEIGHT THIS DRAWING				337	

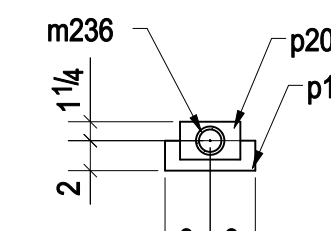


ONE - GUARDRAIL - 173GR1

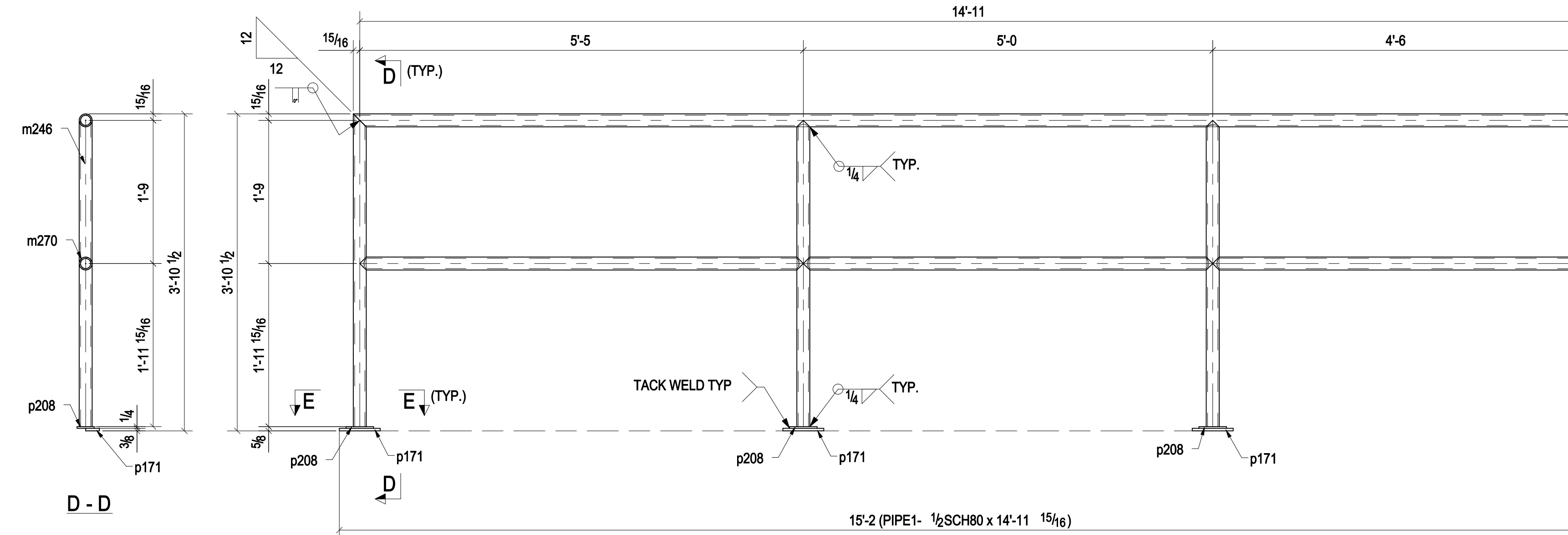
GALV.



B - B

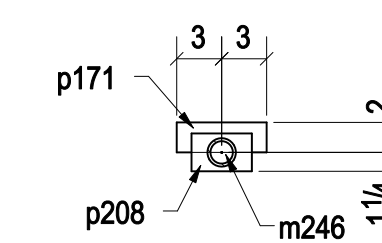


C - C



ONE - GUARDRAIL - 173GR2

GALV.



E - E

△		
↑	REVISED AS MARKED	
0	FOR FABRICATION	
NO.	REVISION	DATE
PROJECT NAME:		
LOCATION:		
CONTR: ---		
DRAWN BY:		
DATE:		
CHECKED BY:		
JOB NO.	---	GUARDRAIL
SHEET NO.	173	△