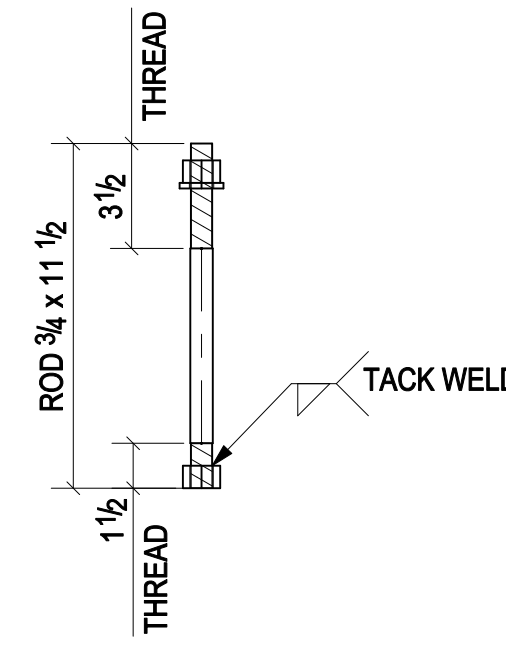
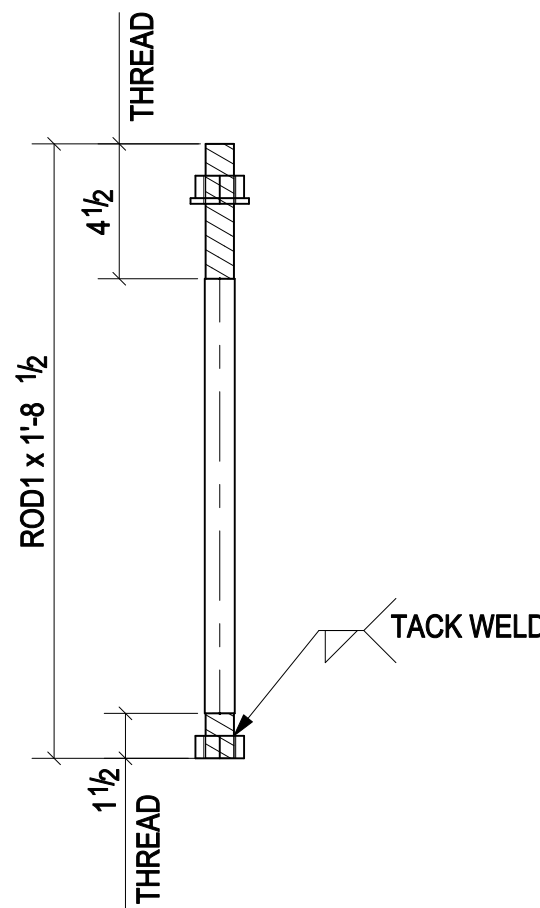


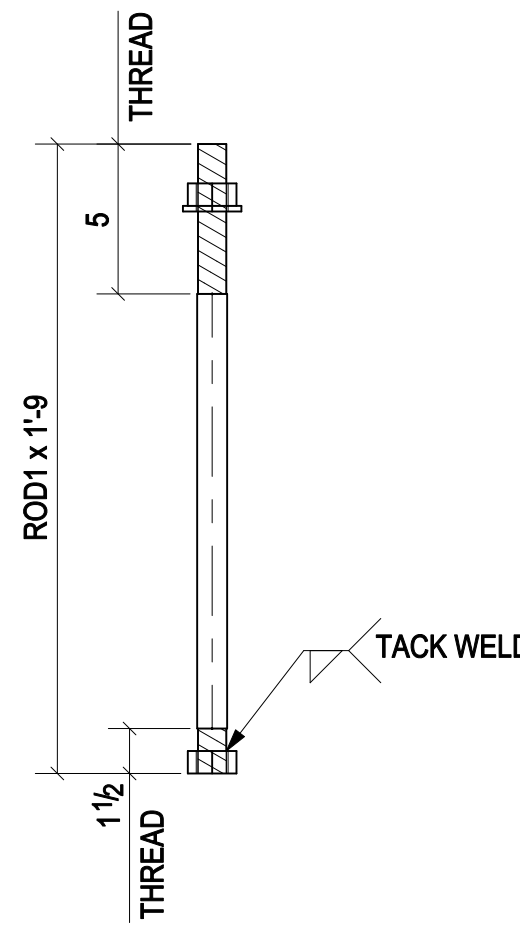
24 - ANCHOR BOLTS - 1AB1
(ASTM F1554)



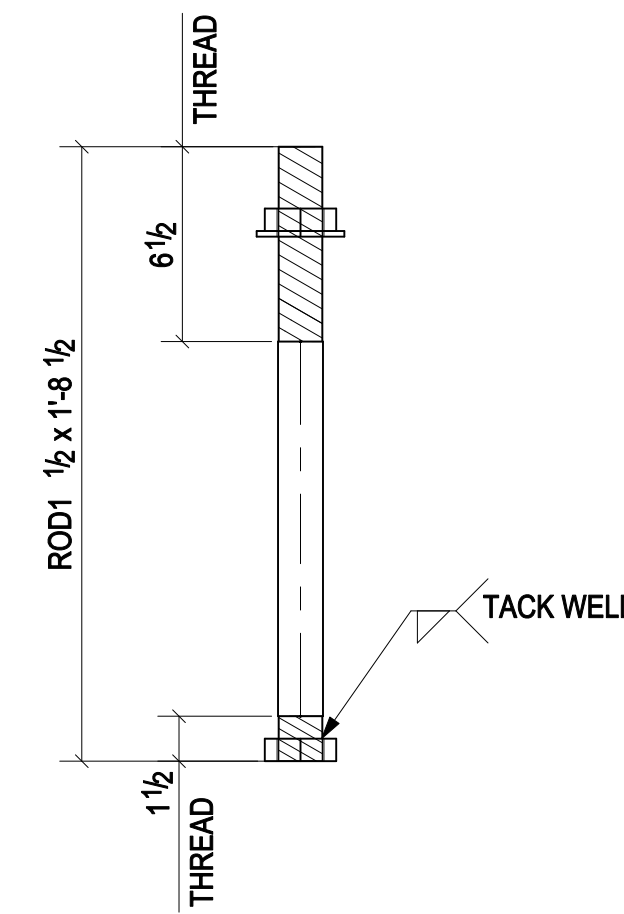
40 - ANCHOR BOLTS - 1AB2
(ASTM F1554)



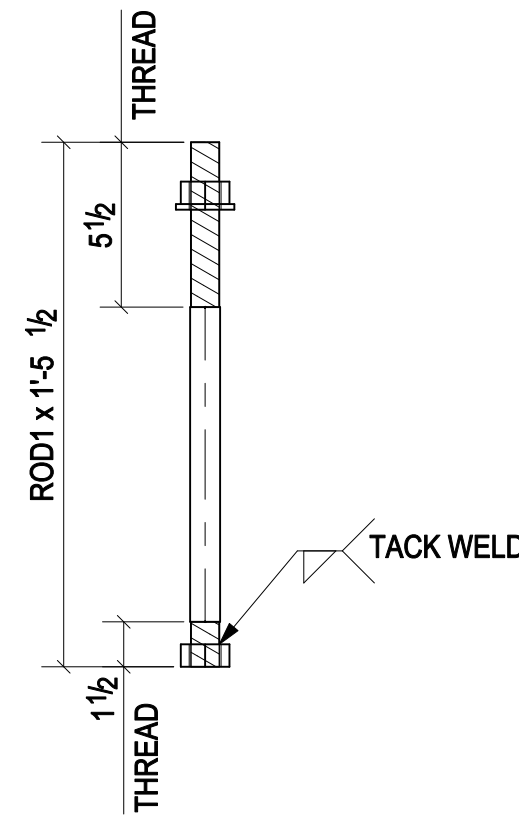
16 - ANCHOR BOLTS - 1AB3
(ASTM F1554)



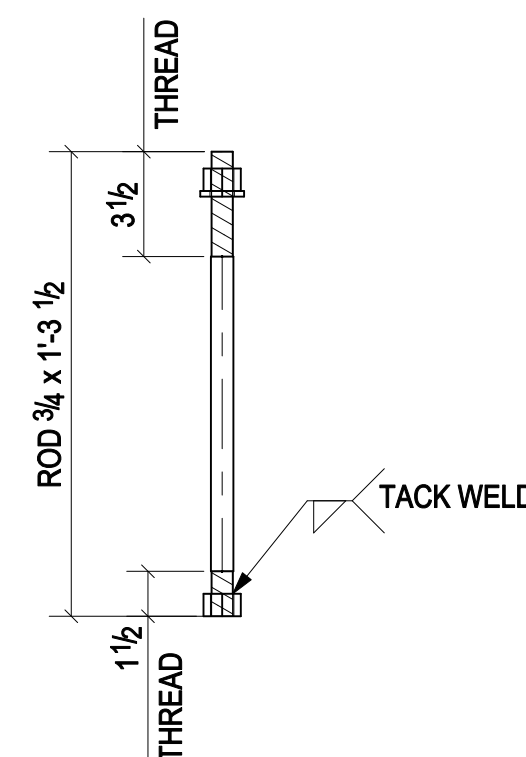
8 - ANCHOR BOLTS - 1AB4
(ASTM F1554)



96 - ANCHOR BOLTS - 1AB7
(ASTM F1554)



24 - ANCHOR BOLTS - 1AB5
(ASTM F1554)



172 - ANCHOR BOLTS - 1AB6
(ASTM F1554)

BILL OF MATERIAL

SHIP MARK	PIECE MARK	QTY	DESCRIPTION	LENGTH	REMARKS
1AB1		24	ROD3/4"	1'-0"	F1554-38
		48	3/4_HEAVY_HEX_NUT		
		24	3/4_WASHER		
1AB2		40	ROD3/4"	0'-11 1/2"	F1554-38
		80	3/4_HEAVY_HEX_NUT		
		40	3/4_WASHER		
1AB3		16	ROD1"	1'-8 1/2"	F1554-105
		32	1_HEAVY_HEX_NUT		
		16	1_WASHER		
1AB4		8	ROD1"	1'-9"	F1554-105
		16	1_HEAVY_HEX_NUT		
		8	1_WASHER		
1AB5		24	ROD1"	1'-5 1/2"	F1554-105
		48	1_HEAVY_HEX_NUT		
		24	1_WASHER		
1AB6		172	ROD3/4"	1'-3 1/2"	F1554-38
		344	3/4_HEAVY_HEX_NUT		
		172	3/4_WASHER		
1AB7		96	ROD1 1/2"	1'-8 1/2"	F1554-105
		192	1-1/2_HEAVY_HEX_NUT		
		96	1-1/2_WASHER		

FOR FABRICATION							
PRINT RECORD						SHOP DRAWING DISCLAIMER	
DATE	APP.	SHOP	FIELD	DIST.	COORD.	F.C.	OFFICE
<small>ALL INFORMATION PROVIDED ON THESE DRAWINGS ARE PREPARED IN ACCORDANCE TO THE CONTRACT DOCUMENTS AND THE SPECIFICATIONS. ALL DIMENSIONS SHOWN ARE DUE TO LACK OF INFORMATION PROVIDED BY THE CONTRACT DOCUMENTS OR SPECIFICATIONS, BUT PREPARED WITH ALL THE INFORMATION AVAILABLE TO US. WE MUST HAVE THESE AREAS ANSWERED BY THE GENERAL CONTRACTOR, ARCHITECT, & ENGINEER, BEFORE WE CAN START FABRICATING ANY MATERIAL. PLEASE RESPOND WITH THIS INFORMATION BY MARKING UP OUR SHOP DRAWINGS.</small>							
MATERIAL:	A36 UNO	HOLE SIZE:	13/16" Ø UNO	BOLT GRADE:	A325-N UNO	MINIMUM WELD:	3/16"
						ELECTRODE:	E-70XX
ARCH:				JOB NAME & LOCATION:			
ENGR:							
CONTR.:							
REF:				JOB:			
DRAWN BY: RN				CHECKED BY: RKB			
SHEET TITLE				SHEET:			
ANCHOR BOLT DETAIL				1			
MODIFIED DATE:				LAST PLOT DATE:			
				CAD FILE NAME: 1			

